



# GAT MONTHLY MEMBERSHIP PROGRESS REPORT

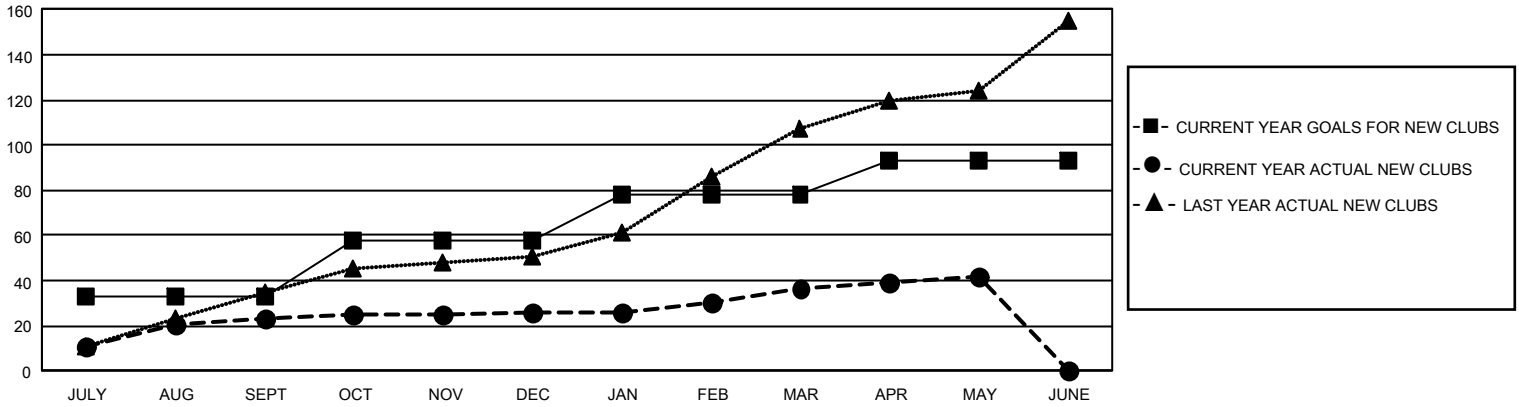
Results as of: 5/31/2023

## GMT Constitutional Area 6, Group K

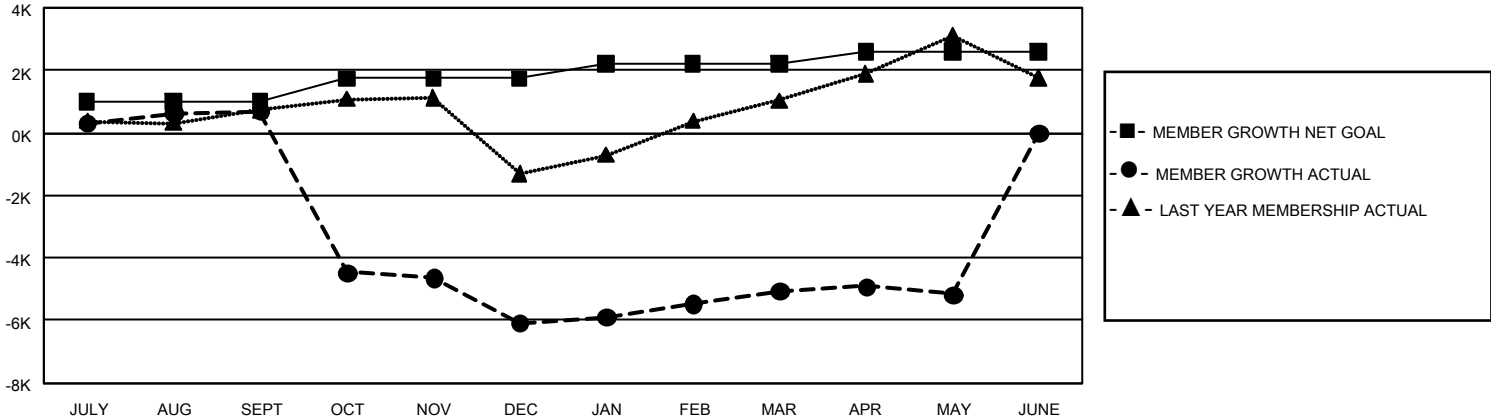
REPORT DOES NOT INCLUDE CLUBS IN UNDISTRICTED AREAS.

Clubs				Members			
RESULTS FOR 2022-2023				RESULTS FOR 2022-2023			
QUARTER	NEW CLUB GOAL	NEW CLUBS	DROPPED CLUBS	QUARTER	MEMBER GROWTH NET GOAL	MEMBER GROWTH ACTUAL	DROPPED MEMBERS ACTUAL (including transfers)
JULY/AUG/SEPT	99	23	14	JULY/AUG/SEPT	985	2,022	1,095
OCT/NOV/DEC	75	3	304	OCT/NOV/DEC	750	715	7,431
JAN/FEB/MAR	60	11	13	JAN/FEB/MAR	470	1,750	408
APR/MAY/JUNE	45	5	6	APR/MAY/JUNE	380	954	885

GOALS AND ACTUAL NEW CLUBS CUMULATIVE



GOALS AND ACTUAL MEMBERS CUMULATIVE



<b>DROPPED CLUBS: 337</b>	738 CLUBS OF 1,526 ADDED 1 OR MORE NEW MEMBERS	<b>GENDER DISTRIBUTION</b>	
		MALE 25,415 (65.20%) FEMALE 13,550 (34.76%) NON BINARY 1 (0.00%) PREFER NOT TO ANSWER 16 (0.04%)	
<b>DROPPED MEMBERS</b>		<a href="#">CLICK HERE FOR CUMULATIVE MEMBERSHIP DATA</a>	TOTAL FAMILY UNIT MEMBERS 21,656
DECEASED 82 CLUB CANCELLED 6,594 OTHER 3,142 <b>TOTAL 9,818</b>	FAMILY MEMBERS PAYING HALF DUES 12,617		